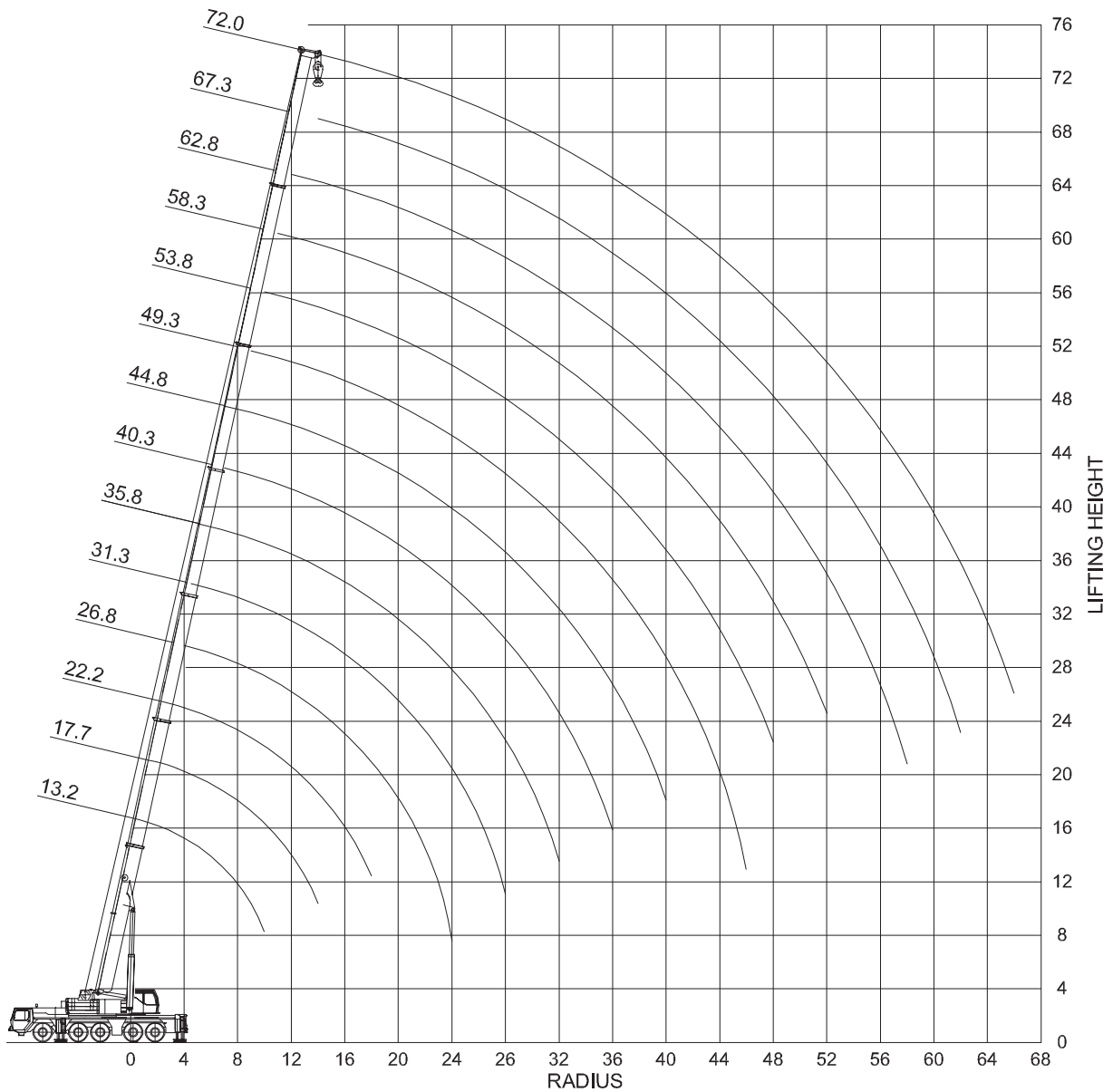


Dimensions are in millimeters.  
The content in this document is mentioned for reference use only. Values may differ from current data. Always contact Mammoet for current project calculations.



Dimensions are in meters.  
 The content in this document is mentioned for reference use only. Values may differ from current data. Always contact Mammoet for current project calculations.

### Main boom

- Outrigger base: 8.9×8.3 m (rear)
- Ballast: 72 - 0 t

Boom length (m)	Devices	Ballast (t)	Radius (m)																																
			3	3.5	4	4.5	5	6	7	8	9	10	11	12	14	16	18	20	22	24	26	28	30	32	34	36	38	40	42	46	50	54	58		
13.2	Special	72	200	142	133	125	117	105	93	82	73	62																							
	Rear	0	151	139	126	114	90	63	47	37	28.7	22.9																							
		12	151	143	129	118	108	87	66	52	41	33																							
		22	151	144	133	121	111	95	81	65	51	42																							
		32	151	144	135	124	114	97	85	74	61	50																							
		42	151	144	134	126	116	100	87	77	68	59																							
		52	151	143	134	125	118	102	89	79	70	62																							
		72	151	142	133	125	117	105	93	82	73	62																							

### Main boom

- Outrigger base: 8.9×8.3 m
- Ballast: 72 - 0 t

Boom length (m)	Radius (m)																																	
	3	3.5	4	4.5	5	6	7	8	9	10	11	12	14	16	18	20	22	24	26	28	30	32	34	36	38	40	42	46	50	54	58	62		
13.2	143	133	123	115	107	95	84	76	69	62																								
17.7		125	123	115	108	95	84	76	69	63	57	52	44																					
22.2			122	115	107	94	84	76	68	62	57	52	44	37	32																			
26.8				107	105	103	94	84	75	68	62	56	52	43	36.5	31	26.8	23.4	16.5															
31.3					85	84	82	80	76	68	62	57	52	44	37	32	27.5	24	21.1	18.7	15.5													
35.8						70	69	68	66	63	59	56	53	44.5	38	32.5	28.2	24.7	21.8	19.4	17.2	15.4	13.9											
40.3							52	51	49	47	45	43.5	40	36.5	33	28.9	25.4	22.5	20.1	17.9	16.1	14.5	13.2	12										
44.8								40	38.5	37	35	33	31	27.5	24.8	22.3	20.2	18.4	16.7	15.5	14.2	13.1	12.2	11.3	10.6	9.9	9.2							
49.3									30.5	29.3	27.9	26.4	23.9	21.6	19.8	18	16.4	15.1	13.8	12.8	11.8	10.9	10.1	9.4	8.6	8.1	7.5	5.8						
53.8										24.4	23.7	22.8	20.9	19.1	17.4	16	14.7	13.4	12.5	11.5	10.6	10	9.3	8.6	8	7.4	6.8	5.9						
58.3											19.2	18.8	17.6	16.3	15.2	14.1	13.2	12.2	11.3	10.5	9.8	9.2	8.5	7.9	7.3	6.8	6.4	5.5	4.9					
62.8												15.6	14.9	14.1	13.2	12.4	11.6	11	10.3	9.7	9.1	8.5	7.9	7.3	6.8	6.4	5.9	5.3	4.7	4.2	3.8			
67.3													12.6	12.1	11.5	10.9	10.3	9.8	9.2	8.7	8.2	7.7	7.3	6.8	6.4	6.1	5.7	5.1	4.5	4.1	3.7	3.3		
72														10.6	10	9.5	9	8.5	7.9	7.4	6.9	6.4	5.9	5.4	5.1	4.8	4.4	4.1	3.6	3	2.6	2.2	1.9	

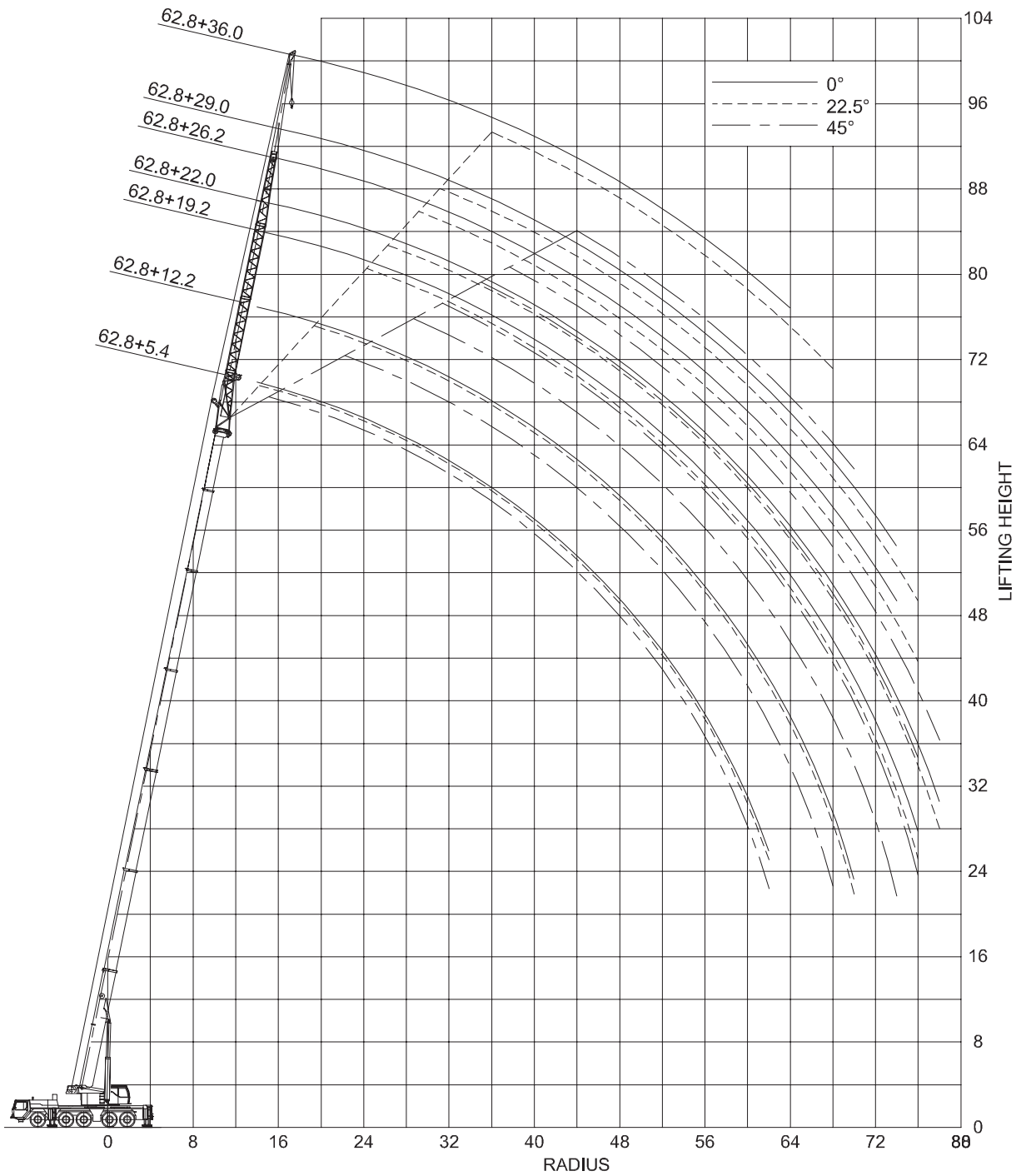
### Main boom

- Outrigger base: 8.9×5.5 m
- Ballast: 72 - 0 t

Boom length (m)	Radius (m)																																	
	3	3.5	4	4.5	5	6	7	8	9	10	11	12	14	16	18	20	22	24	26	28	30	32	34	36	38	40	42	46	50	54	58	62		
13.2	125	114	104	88	74	56	44	35.5	28.3	23.3																								
17.7		113	92	77	66	50	40.5	33	27.7	23.6	19.9	16.9	12.5																					
22.2			82	70	61	47.5	38.5	32	26.9	23.1	20	17.5	13.4	10.3	7.9																			
26.8				74	64	57	45	37	31	26.7	23.1	20.1	17.7	14	11.2	8.9	7	5.6	4.4															
31.3					60	54	43.5	36	30.5	26.5	23.1	20.4	18.1	14.5	11.8	9.7	8	6.5	5.3	4.3	3.5													
35.8						48.5	39.5	33	28.3	24.5	21.4	18.8	16.7	13.3	10.7	8.7	7.2	5.9	4.8	3.8	3	2.3	1.7											
40.3							30	25.8	22.3	19.4	17	15	11.8	9.4	7.5	6	4.8	3.7	2.9															
49.3								21.7	19.2	17	15.2	12.3	10.1	8.3	6.8	5.6	4.6	3.8	3	2.4														
53.8									18.2	16.2	14.5	11.7	9.5	7.8	6.4	5.3	4.3	3.4	2.7															
58.3										15.5	14.4	11.7	9.7	8	6.6	5.5	4.5	3.7	3	2.4														
62.8											13.4	10.9	8.9	7.3	6	4.9	4	3.2	2.5															
67.3												9.9	8	6.4	5.2	4.1	3.2	2.4																
72													9.7	7.9	6.4	5.2	4.1	3.3	2.5															

t = metric tons.

The content in this document is mentioned for reference use only. Values may differ from current data. Always contact Mammoet for current project calculations.



Dimensions are in meters.  
The content in this document is mentioned for reference use only. Values may differ from current data. Always contact Mammoet for current project calculations.

### Main boom with fixed jib

- Outrigger base: 8.9x8.3 m
- Ballast: 72 - 0 t

Boom length (m)	Jib length (m)	Jib offset (°)	Radius (m)																																							
			3	3.5	4	4.5	5	6	7	8	9	10	11	12	14	16	18	20	22	24	26	28	30	32	34	38	42	46	50	54	58	62	66	70								
13.2	5.4	0	60	60	58	56	54	49.5	45	41	37.5	34.5	32	29.9	26.3	23.6																										
		45			36.5	35.5	34.5	33	31	29.7	28.5	27.4	26.5	25.8	10.5																											
12.2	0	20.9	20.9	20.9	20.9	20.9	20.9	20.9	20.9	19.8	18	16.2	15	12.8	11.2	9.8	8.7	7.7																								
		22.5						16.1	14.8	13.8	12.9	12.2	11.5	10.9	9.9	9	8.3	7.8	7.4																							
		45									10.5	10.3	9.8	9.5	8.9	8.4	8.2	8.2																								
19.2	0	20.9	20.9	20.9	20.9	20.9	20.2	19.2	18.2	16.8	15.4	14	12.9	11	9.5	8.3	7.3	6.5	5.9	5.3	4.9																					
		22.5										11.6	11	10.5	9.4	8.6	8	7.4	6.9	6.5	6.1	5.8																				
		45													7.5	7.1	6.8	6.5	6.3	6.1																						
22	0	13.1	13.2	13.3	13.2	13.1	12.9	12.5	12	11.5	11	10.5	10	9.1	8.2	7.4	6.5	5.9	5.4	4.9	4.5	4.2	3.9																			
		22.5												7.9	7.3	6.8	6.4	6	5.7	5.5	5.3	5.1	5	5																		
		45																5.5	5.3	5.2	5	5	5	5																		
26.2	0			12.9	12.9	13	12.8	12.5	12	11.4	10.8	10.2	9.5	8.3	7.2	6.3	5.6	5.1	4.5	4.2	3.8	3.5	3.3	3																		
		22.5													6.8	6.2	5.7	5.3	4.9	4.6	4.4	4.1	3.9	3.8	3.6																	
		45																	4.2	4	3.8	3.7	3.6	3.6	3.6																	
29	0						8.8	8.8	8.9	8.7	8.6	8.4	8.1	7.5	6.8	6.2	5.6	5.1	4.6	4.2	3.9	3.6	3.3	3.1	2.7																	
		22.5																	5.5	5.1	4.7	4.4	4.2	3.9	3.7	3.5	3.4	3.2	3.1													
		45																			3.6	3.4	3.3	3.2	3.1	3.1																
36	0									6.3	6.2	6.1	5.9	5.6	5.2	4.8	4.4	4.1	3.8	3.5	3.2	2.9	2.7	2.5	2.1	1.8	1.6															
		22.5																		3.6	3.4	3.2	3	2.8	2.6	2.5	2.4	2.1	2	1.9												
		45																																								
49.3	5.4	0									24.6	23.8	22.9	20.8	19	17.2	15.8	14.5	13.2	12.2	11.2	10.3	9.6	8.8	7.5	6.4	5.5	4.8														
		22.5											23.4	22.5	20.6	18.8	17.1	15.6	14.4	13.2	12.1	11.2	10.4	9.6	8.9	7.5	6.4	5.5														
		45												20.8	19.7	18.5	17.1	15.6	14.4	13.2	12.1	11.3	10.4	9.6	8.9	7.6	6.5	5.6														
12.2	0										17.9	17.7	17.6	17.4	16.8	16.2	15.1	14	13	12.1	11.1	10.4	9.7	9	8.4	7.2	6.2	5.4	4.7	4.1												
		22.5												12	11.5	11	10.5	10.2	9.8	9.4	9	8.6	8.3	7.9	7.1	6.2	5.5	4.8	4.2													
		45																	9	8.8	8.6	8.5	8.3	8.2	8.1	8	7.7	7.2	6.4	5.6	4.9	4.3										
19.2	0											11.3	11.2	11	10.7	10.4	10	9.6	9.1	8.7	8.2	7.8	7.4	7.1	6.4	5.7	4.9	4.4	3.9	3.5	3											
		22.5																		8.4	8	7.6	7.3	6.9	6.6	6.4	6.2	5.9	5.6	5.2	4.9	4.6	4.1	3.6	3.2							
		45																			6	5.9	5.7	5.6	5.5	5.4	5.1	5	4.8	4.7	4.2	3.7										
22	0										8.1	8.1	8.1	8.1	8	7.9	7.7	7.5	7.3	7.1	6.9	6.7	6.5	6.3	5.8	5.4	4.9	4.4	4	3.5	3.1	2.8										
		22.5																			6.4	6.2	6	5.9	5.7	5.6	5.4	5.3	5	4.8	4.5	4.3	4	3.7	3.3	2.9						
		45																				5	5	4.9	4.8	4.8	4.6	4.4	4.3	4.2	4.1	3.8	3.3									
29	0										5.8	5.8	5.8	5.8	5.8	5.8	5.8	5.6	5.5	5.3	5.1	5	4.8	4.6	4.3	4.1	3.8	3.5	3.3	3.1	2.8	2.6	2.3									
		22.5																			4.4	4.2	4.1	4	3.9	3.7	3.6	3.4	3.2	3.1	3	2.9	2.8	2.7	2.4							
		45																							3.2	3.1	3	3	2.9	2.9	2.9	2.9	2.9	2.9	2.8							
36	0											4.2	4.2	4.2	4.1	4.1	4	3.9	3.7	3.6	3.5	3.4	3.1	2.9	2.7	2.5	2.3	2.2	2	1.9	1.7											
		22.5																						2.9	2.8	2.7	2.6	2.4	2.3	2.2	2.1	2	1.9	1.8	1.8	1.8						
		45																																								

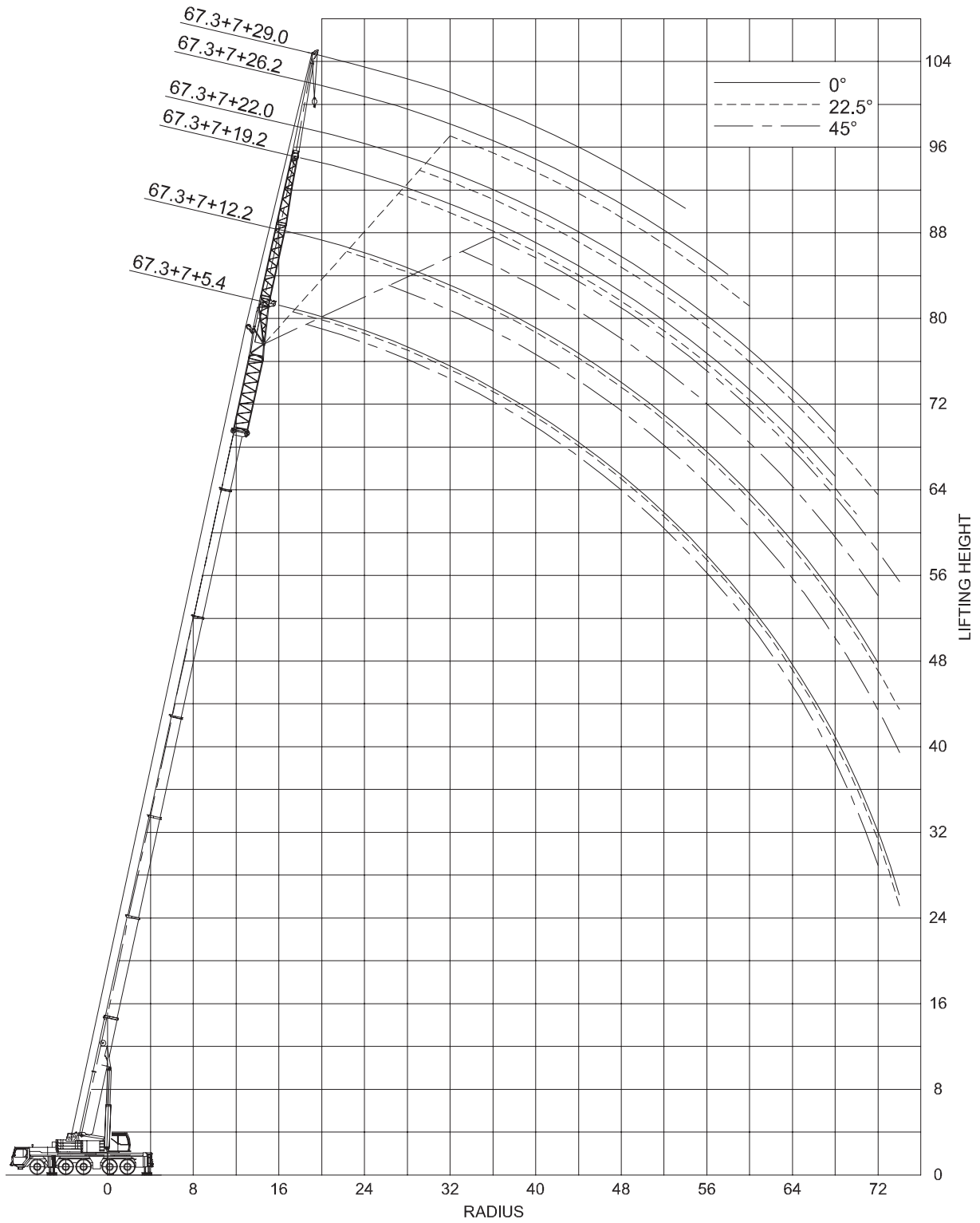
t = metric tons.

The content in this document is mentioned for reference use only. Values may differ from current data. Always contact Mammoet for current project calculations.

Boom length (m)	Jib length (m)	Jib offset (°)	Radius (m)																																
			3	3.5	4	4.5	5	6	7	8	9	10	11	12	14	16	18	20	22	24	26	28	30	32	34	38	42	46	50	54	58	62	66	70	
62.8	5.4	0												12.1	11.5	10.9	10.2	9.6	8.9	8.4	7.8	7.3	6.8	6.4	5.5	4.9	4.2	3.7	3.2	2.8	2.5				
		22.5													11.3	10.7	10.1	9.4	8.8	8.2	7.7	7.3	6.8	6.4	5.6	4.9	4.3	3.7	3.3	2.8	2.5				
		45													11.2	10.6	9.9	9.2	8.7	8.2	7.7	7.3	6.8	6.4	5.6	4.9	4.3	3.8	3.3	2.8	2.5				
	12.2	0												8.9	8.7	8.3	7.9	7.6	7.2	6.8	6.4	6.1	5.8	5.5	5	4.4	4	3.5	3.1	2.7	2.3	2.1	1.7		
		22.5													7.9	7.5	7.1	6.8	6.5	6.2	5.9	5.6	5.4	4.9	4.5	4	3.6	3.2	2.8	2.4	2.1	1.8			
		45														6.9	6.6	6.3	6	5.8	5.6	5.4	4.9	4.5	4.1	3.7	3.3	2.8	2.4	2.1					
	19.2	0												6.4	6.2	6.1	6	5.9	5.8	5.6	5.4	5.1	4.9	4.7	4.3	3.9	3.5	3.2	2.8	2.5	2.1	1.8	1.5		
		22.5																																	
		45																																	
22	0												5.5	5.4	5.3	5.2	5.2	5.1	5	4.9	4.8	4.6	4.5	4.1	3.7	3.4	3.1	2.8	2.5	2.2	1.9	1.6			
	22.5																																		
	45																																		
26.2	0													4.5	4.4	4.3	4.2	4.2	4.1	4	4	3.9	3.9	3.6	3.3	3	2.7	2.4	2.1	1.8	1.6	1.3			
	22.5																																		
	45																																		
29	0													4	3.9	3.8	3.8	3.7	3.7	3.6	3.6	3.6	3.5	3.3	3.1	2.9	2.6	2.4	2.1	1.8	1.6	1.3			
	22.5																																		
	45																																		
36	0																																		
	22.5																																		
	45																																		
67.3	5.4	0												9.1	8.8	8.4	8	7.6	7.2	6.8	6.4	6.1	5.8	5.5	5	4.5	4	3.6	3.1	2.7	2.4	2.1			
		22.5													8.6	8.2	7.8	7.4	7	6.7	6.3	6	5.8	5.5	5	4.5	4	3.6	3.2	2.8	2.4	2.1			
		45														8.1	7.7	7.4	7	6.7	6.3	6	5.8	5.5	5	4.5	4.1	3.6	3.2	2.8	2.4	2.1			
	12.2	0												7.2	7	6.8	6.5	6.2	6	5.7	5.5	5.2	5	4.8	4.3	4	3.6	3.3	2.9	2.6	2.3	2	1.7		
		22.5																																	
		45																																	
	19.2	0												5.1	5	4.9	4.8	4.8	4.7	4.5	4.3	4.1	4	3.6	3.3	3.1	2.8	2.5	2.3	2	1.7	1.4			
		22.5																																	
		45																																	
22	0												4.4	4.4	4.3	4.3	4.2	4.2	4.1	3.9	3.8	3.7	3.5	3.2	2.9	2.7	2.5	2.2	2	1.7	1.4				
	22.5																																		
	45																																		
26.2	0																																		
	22.5																																		
	45																																		
29	0																																		
	22.5																																		
	45																																		
72	5.4	0												7.1	6.9	6.6	6.3	6	5.7	5.4	5.1	4.8	4.4	3.8	3.3	2.7	2.3	1.8	1.4						
		22.5													6.8	6.5	6.2	5.9	5.6	5.4	5.1	4.8	4.5	3.9	3.3	2.8	2.3	1.8	1.4						
		45													6.7	6.5	6.2	5.9	5.7	5.4	5.1	4.9	4.6	3.9	3.4	2.8	2.3	1.9	1.4						

t = metric tons.

The content in this document is mentioned for reference use only. Values may differ from current data. Always contact Mammoet for current project calculations.



Dimensions are in meters.  
The content in this document is mentioned for reference use only. Values may differ from current data. Always contact Mammoet for current project calculations.

### Main boom with fixed jib

- Outrigger base: 8.9x8.3 m
- Ballast: 72 - 0 t

Boom length (m)	Jib length (m)	Jib angle (°)	Radius (m)																																
			3	4	5	6	7	8	9	10	11	12	14	16	18	20	22	24	26	28	30	32	34	38	42	46	50	54	58	62	66	70	74		
13.2	5.4	0	29.9	25.9	22.8	20.2	18.3	16.6	15	13.9	12.8	11.8	10.4	9.1	8	7.2	6.5																		
		22.5		26.9	23.7	21	18.9	17.1	15.6	14.2	13.1	12.1	10.5	9.2	8	7.1	6.3																		
		45				21.7	19.4	17.5	15.9	14.5	13.2	12.2	10.4	9.1	7.8	6.8	4.4																		
12.2	0	0	20.9	20.9	20.9	20.9	20.9	18.6	17.1	15.7	14.3	13.4	11.7	10.4	9.3	8.4	7.6	6.8	6.2	5.7															
		22.5					15.7	14.7	13.9	13.2	12.6	12	10.8	9.7	8.6	7.8	7.1	6.5	5.9	5.4															
		45							10.2	9.9	9.3	8.9	8.4	7.7	6.9	6.1	5.5	4.8																	
26.2	0	0		10	10.1	10.1	10.1	10.2	10	9.7	9.4	8.6	7.7	6.9	6.2	5.5	5	4.6	4.2	3.9	3.6	3.3	2.9	2.5											
		22.5											6.3	5.8	5.3	4.9	4.5	4.2	3.9	3.6	3.4	3.1	2.8	2.5											
		45													4.1	3.9	3.7	3.4	3.2	3.1	2.8														
29	0	0					7.5	7.5	7.6	7.6	7.5	7.4	7.1	6.7	6.2	5.7	5.2	4.8	4.4	4.1	3.7	3.5	3.2	2.8	2.4	2.2									
		22.5													5.2	4.9	4.6	4.3	4	3.7	3.5	3.3	3.1	2.7	2.4										
		45																	3.5	3.4	3.3	3.1	3	2.6	2.4										
62.8	5.4	0											8.3	8	7.6	7.3	6.9	6.5	6.2	5.9	5.6	5.3	5.1	4.6	4.1	3.7	3.2	2.8	2.4	2.1	1.8	1.5			
		22.5													7.8	7.5	7.1	6.7	6.4	6.1	5.8	5.5	5.3	5	4.5	4.1	3.7	3.3	2.8	2.5	2.1	1.8	1.5		
		45														7.1	6.8	6.6	6.3	6.1	5.8	5.6	5.3	5.1	4.6	4.1	3.7	3.3	2.9	2.5	2.1	1.8			
12.2	0	0												6.4	6.3	6	5.8	5.5	5.3	5.1	4.8	4.6	4.4	4	3.6	3.3	3	2.6	2.3	2	1.6	1.3	1.1		
		22.5															5.8	5.6	5.3	5.1	4.9	4.7	4.5	4.3	3.9	3.6	3.3	3	2.7	2.4	2.1	1.7	1.4	1.1	
		45																	5.1	5	4.8	4.6	4.4	4.3	3.9	3.6	3.3	3	2.7	2.4	2.1	1.7	1.4	1.1	
19.2	0	0												4.8	4.7	4.7	4.6	4.5	4.4	4.2	4	3.8	3.7	3.4	3.1	2.8	2.5	2.3	2	1.7	1.4	1.1			
		22.5																	4.2	4	3.9	3.7	3.5	3.2	3	2.7	2.5	2.3	2.1	1.8	1.5	1.2			
		45																			3.6	3.5	3.2	3	2.8	2.5	2.3	2.1	1.9	1.6	1.4	1.2			
22	0	0													4.2	4.1	4.1	4	4	3.9	3.7	3.6	3.5	3.2	2.9	2.7	2.4	2.2	1.9	1.7	1.4	1.1			
		22.5																		3.7	3.7	3.5	3.4	3.1	2.9	2.6	2.4	2.2	2	1.8	1.6	1.3	1		
		45																				3.2	3.1	2.9	2.7	2.5	2.3	2.1	1.9	1.7	1.4	1.2			
26.2	0	0													3.4	3.4	3.3	3.2	3.2	3.2	3.1	3	2.9	2.7	2.5	2.2	2	1.8	1.5	1.3	1				
		22.5																			3	2.9	2.9	2.7	2.4	2.2	2	1.8	1.6	1.4	1.2	1			
		45																						2	1.8	1.7	1.6	1.4	1.3	1.1	1				
29	0	0														3	3	2.9	2.9	2.8	2.8	2.7	2.7	2.5	2.3	2.1	1.9	1.7	1.5	1.3	1.1				
		22.5																					2.2	2.1	1.9	1.8	1.6	1.4	1.3	1.2					
		45																							1.7	1.6	1.5	1.4	1.2	1.1					
67.3	5.4	0												6.4	6.1	5.9	5.6	5.4	5.2	4.9	4.7	4.5	4.3	4	3.6	3.3	3	2.6	2.3	2	1.6	1.4	1.1		
		22.5														6	5.8	5.6	5.3	5.1	4.9	4.7	4.5	4.3	3.9	3.6	3.3	3	2.7	2.3	2	1.7	1.4	1.1	
		45															5.8	5.5	5.3	5.1	4.9	4.7	4.5	4.3	3.9	3.6	3.3	3	2.7	2.4	2	1.7	1.4		
12.2	0	0													5.2	5.1	4.9	4.7	4.6	4.4	4.2	4	3.8	3.7	3.4	3.1	2.8	2.6	2.3	2	1.8	1.5	1.2		
		22.5															4.5	4.3	4.2	4	3.8	3.7	3.6	3.3	3	2.8	2.6	2.4	2.1	1.9	1.6	1.3	1		
		45																4.1	3.9	3.8	3.6	3.5	3.3	3	2.8	2.6	2.4	2.2	1.9	1.6	1.3	1			
19.2	0	0													3.8	3.7	3.7	3.6	3.5	3.4	3.2	3.1	3	2.7	2.5	2.3	2	1.8	1.6	1.4	1.2				
		22.5																		3.2	3.1	2.9	2.8	2.6	2.4	2.2	2.1	1.9	1.7	1.5	1.3	1.1			
		45																				2.9	2.8	2.6	2.4	2.2	2.1	1.9	1.8	1.6	1.4	1.2			
22	0	0														3.4	3.3	3.3	3.2	3.2	3.1	3	2.9	2.8	2.6	2.4	2.2	2	1.8	1.6	1.4	1.2			
		22.5																			2.9	2.8	2.7	2.5	2.3	2.1	2	1.8	1.6	1.5	1.3	1.1			
		45																						2.4	2.3	2.1	2	1.8	1.7	1.5	1.4	1.2			
26.2	0	0															2.5	2.4	2.4	2.4	2.3	2.2	2	1.8	1.7	1.5	1.3	1.1							
		22.5																					2.2	2.1	2	1.8	1.6	1.5	1.3	1.2					
		45																							1.9	1.9	1.8	1.7	1.6	1.4	1.2				

t = metric tons.

The content in this document is mentioned for reference use only. Values may differ from current data. Always contact Mammoet for current project calculations.